

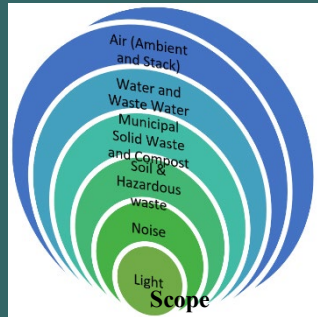
# LABORATORY FACILITIES

## Modern Analytical instruments:

- Gas chromatography (GC)
- Liquid chromatography–mass spectrometry (LC-MS/MS)
- Gas chromatography mass spectrophotometer (GC-MS/MS)
- High pressure liquid chromatography (HPLC)
- Inductively coupled plasma Mass Spectrometry (ICP-MS)
- Atomic Absorption Spectrophotometer (AAS)
- Double Beam UV-Vis Spectrophotometer

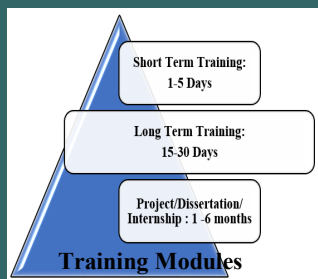


## MAJOR CLIENTS



## CONTACT US:

**UMESH C. MISHRA, Director**  
**CES Analytical and Research Services India Pvt. Ltd. (Formerly Known as Creative Enviro Services)**  
 Add. : P. No. 42, 48, 48A, Doorsanchar Colony, Gulmohar, Bhopal, Madhya Pradesh, India, 462039  
 9425009319, 09425006259, 0755-4299319, 4044117, telefax-07554243510  
 www.creativeenviroservices.com  
 Email id: cesanalytical@gmail.com; creativelab.bpl@gmail.com



## Major Certifications



## CES Analytical and Research Services (I) Private Limited

(A NABL & EPA Certified Leading Testing Laboratory)

CES Analytical and Research Services India Private Limited, Bhopal has been functioning under Creative Enviro Services (CES) since 2003 to benefit the state by extending analytical services mainly in the areas of Chemical Science, Agriculture, Environment, Food, Microbiology, and Biotechnology. The laboratory is well equipped and is also ISO (17025: 2017), certified laboratory by NABL (National Accreditation Board for Testing and Calibration Laboratories [certificate no.: TC-6872], recognized laboratory under The Environmental (Protection) Act, 1986, and Bureau Veritas under ISO 9001:2015, 14001:2015 and 45001:2018 certified.

Our **Environmental Testing Laboratory** is equipped to analyse the physico-chemical and microbiological characteristics of water (Surface water, ground water, drinking water, construction water, swimming pool water, processed food industries water, industrial water, packaged drinking water/ packaged natural mineral water); residues in water, waste water (effluent/ sewage), hazardous wastes (liquid/ slurry/ sludge), used/ waste oil, soil/sediments fertilizer /agricultural soil, residues in soil, atmospheric pollution (ambient air, stack emission (process/ vent / DG), ambient noise level (excluding vibration), source (DG/ traffic/ machine) noise level (excluding vibration).

Our **Food Testing Laboratory** is equipped to analyse the physico-chemical and microbiological characteristics of food materials. Samples from different industries like food processing industries, edible oil industries, exporters & importers and biotech industries are sent to us for analysis. The samples are analysed with the standard protocols like AOAC, FSSAI, and BIS standards.

[www.creativeenviroservices.com](http://www.creativeenviroservices.com)

## PRODUCTS TESTED

The multivariate products sent to our laboratory for analysis include: processed food products, fruits & vegetables, honey, beverages, spices, pulses & cereal foods, fats and oil products, confectionery, meat & meat products, milk & milk products, water, and seaweeds.



## ANALYTICAL SERVICES

The following different qualities in food samples can be analyzed in our food testing laboratory: proximal analysis by FSSAI and BIS protocols, Residue Testing, Pesticide Testing, Mycotoxins Testing, Antibiotics Testing, Veterinary Drugs, Natural Toxins, Food Authenticity Testing, Meat Speciation Testing, Food Fraud Analysis, Food Adulterant Testing, Food Dye Testing, Quality Assurance and Quality Control, Allergen Testing, Ingredient Authenticity & Profiling Analysis, Packaging & Food Contact Substance Analysis and Other Contaminants and Adulterants by LC-MS/MS and GC-MS/MS, analysis of vitamins, Aflatoxin-M1, M2, B1, B2, G-1, G2, dyes, fatty acids, and Residual solvent by HPLC, element analysis in water and foods by ICP-MS, analysis of food texture, viscosity measurement, and microbiological analytical services.

## OTHER FACILITY AVAILABLE FOR ENVIRONMENTAL ANALYSIS

Millipore Water purification system, Flame photometer, BOD Incubator, Water bath, Analytical balances, Autoclave, pH meter, Conductivity meter, Spectrophotometer (visible), Turbidity meter, Noise level meter, Stack monitoring kit, Meteorological sensor, Deep Freezer, COD digestion apparatus, Hot air Oven, Muffle Furnace, Hot Plate, TKN Distillation, Digestion Chamber, Vacuum Pump, Filtration Assembly, Magnetic Stirrer, PM 2.5 & PM 10 Sampler, Laminar Air Flow, Microscope, Time Totalizer, Flow calibrator, Water bath, Bomb Calorimeter, Flash Point Apparatus, VOC Analyzer, Flue Gas Analyzer, Lux meter, Digital Colony Counter, Work place sampler, Personal Sampler, Bacteriological Incubator, TCLP extractor, Centrifuge Machine, Mechanical Shaker, Water and soil analysis kit, Rotary Evaporator, Soxhlet apparatus, Nitrogen Evaporator, Microwave digester.

## STUDENTS PROJECTS

M.Sc, M.Phil. and Ph.D. students from different institutions are permitted to do their research work in our labs.



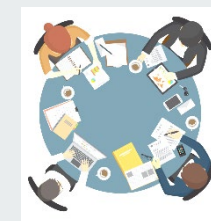
## TRAININGS

To organize training programme and workshop for the UG, PG and research scholar students for 1-5 Days and 15-30 Days on basic and advance Instrumentation; To extend analytical facilities for Project/Dissertation/Internship PhD. experimental work for BSc./MSc/M. Phil/B. Tech/M.Tech for 1-6 months.

## CONSULTANCY SERVICES

Consultancy is offered in the following areas:

- Food Industry
- Chemical Industry
- Power Industry
- Mining Industry



## OTHER SERVICES [SISTER UNIT]

"Creative Enviro Services (CES)" has been working since 2003 in the field of environmental sustainability and helping industries in many ways. The principle scope of Creative Enviro Services (CES) is as under:

- Environmental Clearances from MoEF & SEAC/SEIAA
- Environment Impact Assessment
- Environment Management Plan
- Industrial & Domestic Waste Water Treatment
- Hazardous Waste/Solid Waste Management
- Waste Reduction and Waste Minimization
- Annual Operation and Maintenance Contract of ETP & STP
- Environment Statement Report
- Annual Monitoring of Environmental Parameters
- Annual Environmental Consultancy